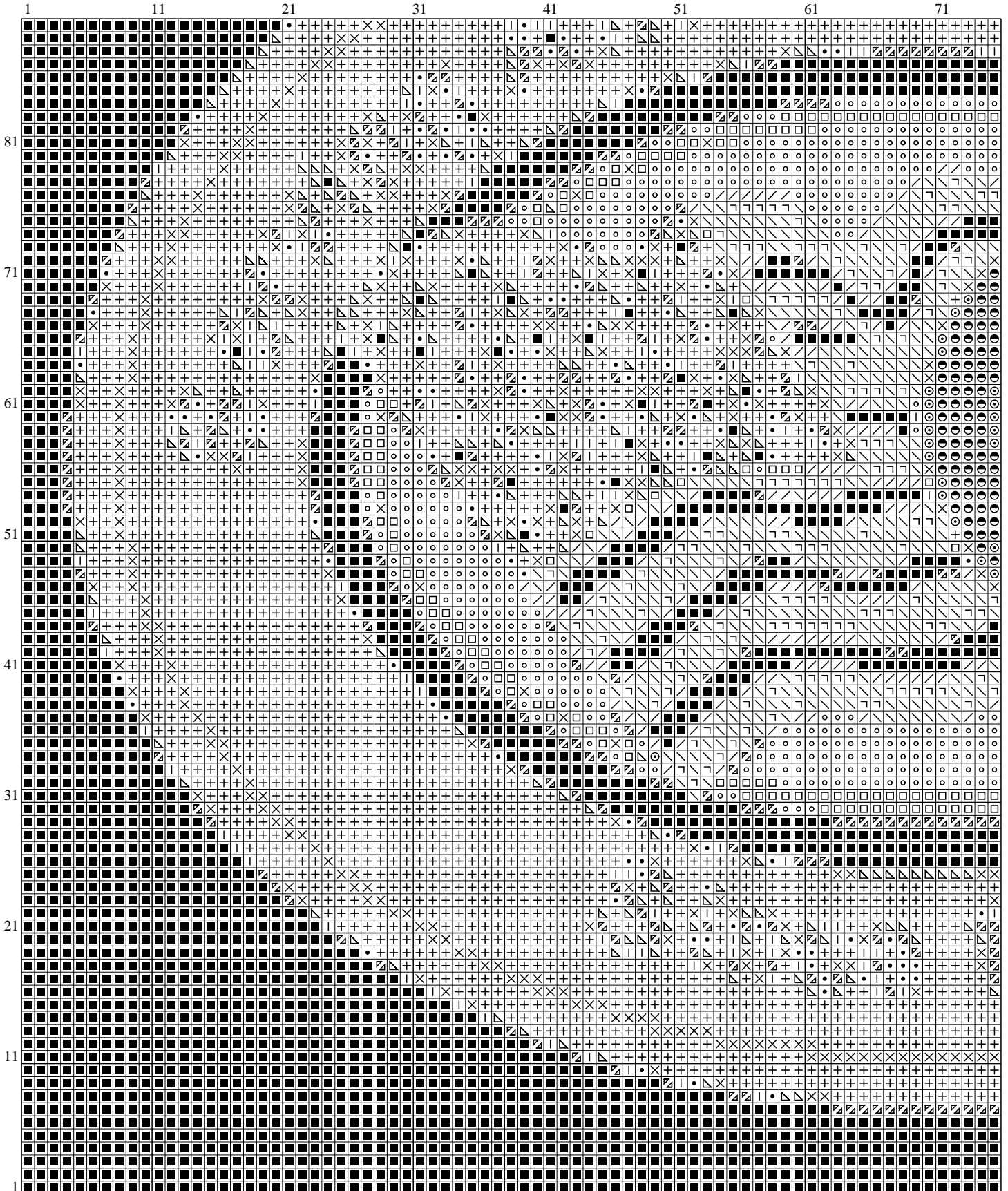


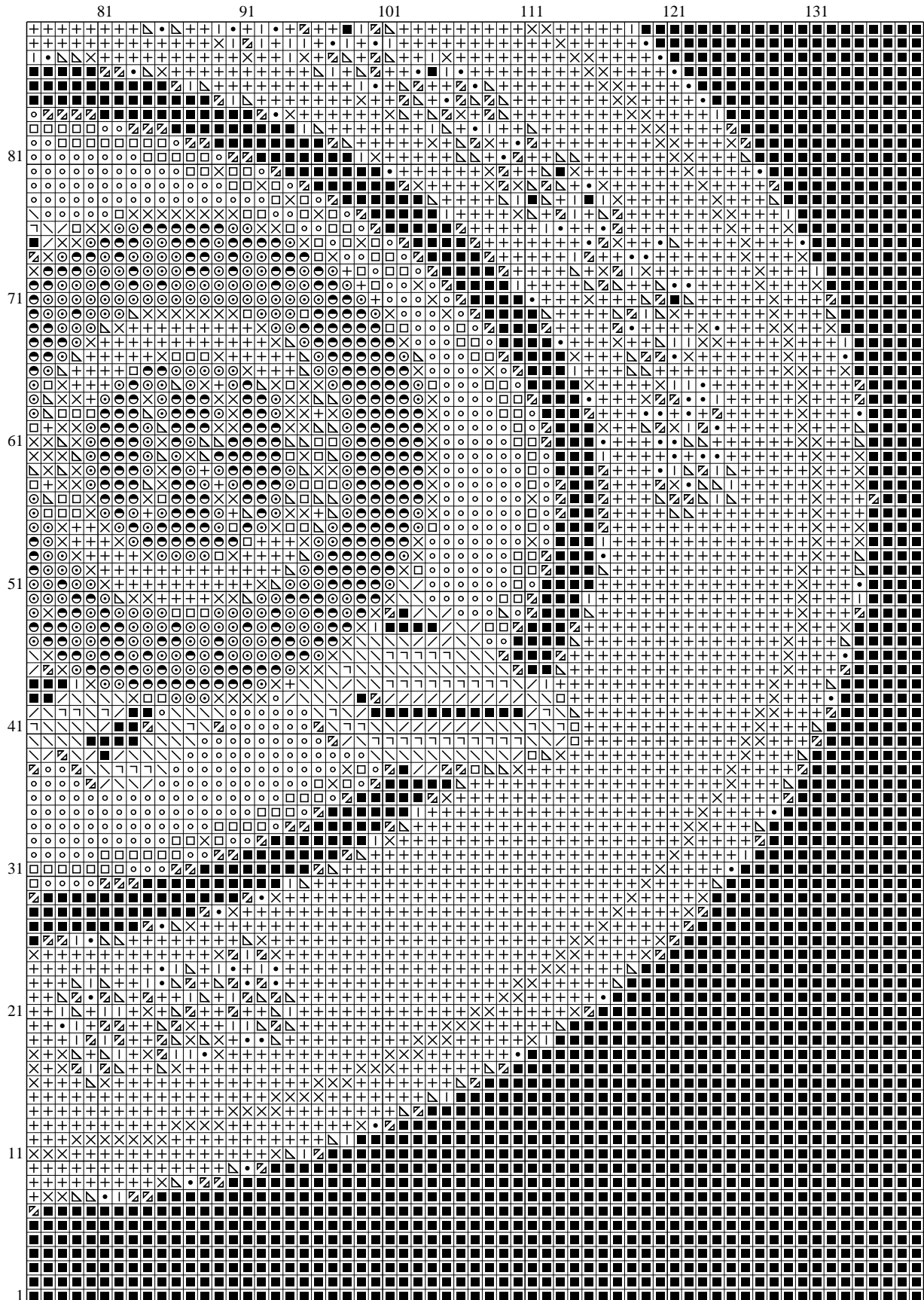
Cross stitch pattern P2P-301574 flag.jpg



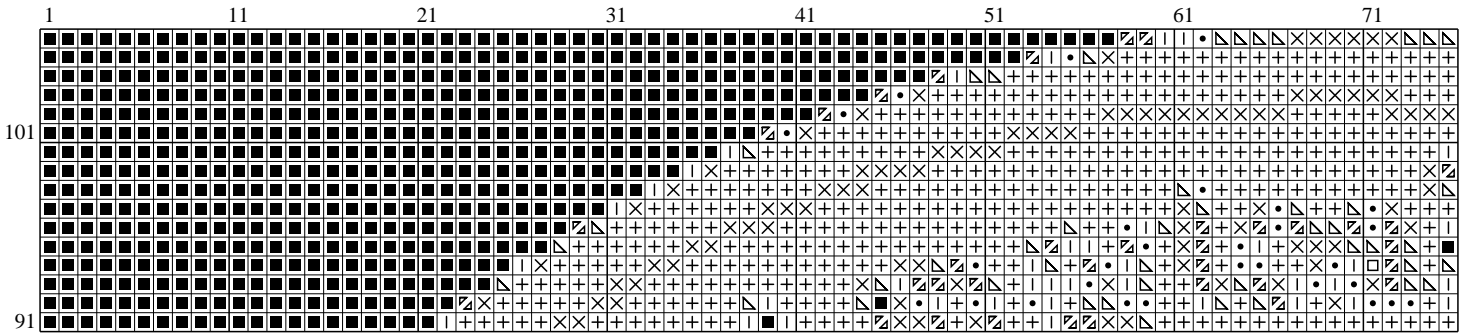
Cross stitch pattern P2P-301574 page 1 of 4



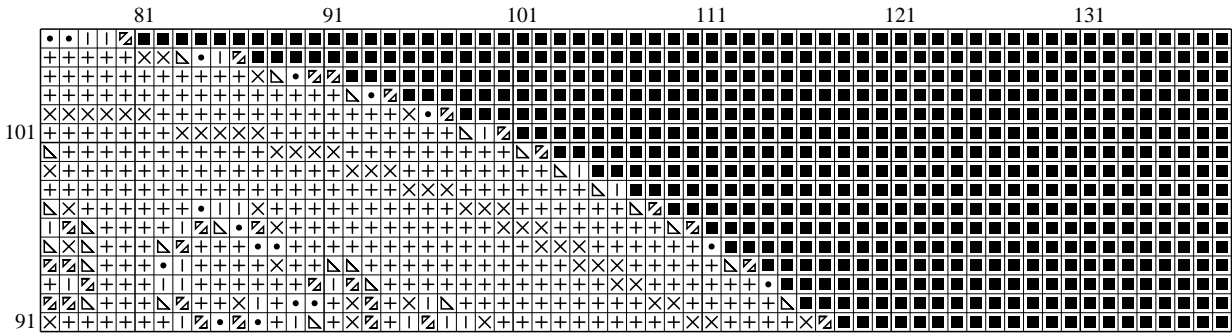
Cross stitch pattern P2P-301574 page 2 of 4



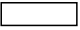


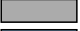



Cross stitch pattern P2P-301574 page 3 of 4










Cross stitch pattern P2P-301574 page 4 of 4



Cross stitch pattern P2P-301574 - DMC color list

Color	Number	Color code	
	4	B5200	Snow White
	1	161	Blue Gray
	1	312	Baby Blue Very Dark
	1	318	Steel Gray Light
	1	334	Baby Blue Medium
	1	350	Coral Medium
	1	352	Coral Light

Color	Number	Color code	
	1	606	Orange-Red Bright
	1	726	Topaz Light
	3	797	Royal Blue
	1	800	Delft Blue Pale
	1	825	Blue Dark
	1	3012	Khaki Green Medium
	1	3755	Baby Blue

Do you sell embroidery products on-line?
This area is available for your company
Email info@pic2pat.com for the possibilities